

# XL FOLDING GOOSENECK



XL 100 Folding Gooseneck (Mechanical)

## YOUR SOLUTIONS-BASED HAULING PARTNER



Low incline ramp

### REVOLUTIONARY DESIGN

The XL Folding Gooseneck handles your heaviest hauling challenges. The **low incline ramp** makes it easy and safe to load and transport pavers, scrapers and other heavy equipment. The **neck adjusts to uneven terrain** without the use of blocks so you can load and unload almost anywhere.



XL 100 FG

### XL FG: OIL FIELD OPTIONS

XL Folding Gooseneck can be fully equipped for use in the oil field. With rollers including **tail rolls, neck rolls, pop-up rollers** and **pick up eyes**, the XL Folding Goosenecks easily accommodate your oil and gas hauling needs.



XL 120 FGE: Oil and Gas spec

### XL FGE: EXTENDABLE OPTION

XL Folding Gooseneck Extendable features the **Patented XL Extend-A-Trac**, which allows for extending and retracting the trailer without hooking and unhooking air and electrical lines. 6" greaseable rollers incorporate oil impregnated bronze bushings to make extending easy.

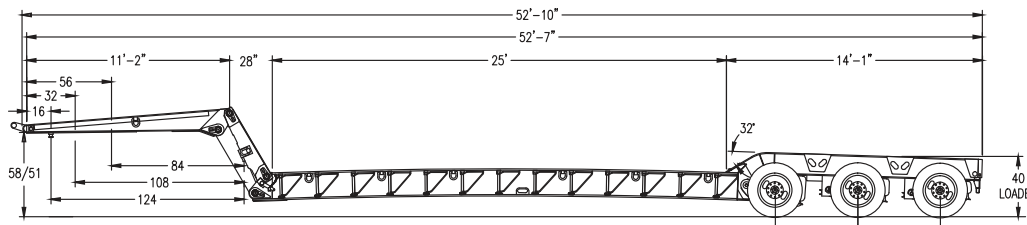
### BUILT WITH YOU IN MIND

- Mechanical neck
- 11' 2" gooseneck length
- 25' main deck
- Bucket well
- Low incline ramp
- 40" rear deck height
- 16", 32" & 56" king pin settings
- 51' 3" overall length
- 124", 108" & 84" swing clearance
- All XL Specialized Trailers' products go through the new, premium paint process. XL paint includes a **full 1 year warranty**.
- Always striving to surpass market standards, all XL Specialized Trailers' products feature a **5 year structural warranty**.

### FIND YOUR SPECIALIZED SOLUTION TODAY

visit [xlspecializedtrailer.com](http://xlspecializedtrailer.com)

# XL FOLDING GOOSENECK



## XL 100 FG

CAPACITY: 100,000 LB OVERALL  
CONCENTRATED: 100,000 LB IN 10'  
OAL: 52' 10" | OAW: 102"

## SPECS

### GOOSENECK

MECHANICAL FOLDING  
11' 2" LONG  
16", 32" & 56" KING PIN SETTING  
124", 108" & 84" SWING CLEARANCE  
58"/51" 5TH WHEEL HEIGHTS  
7° LOAD ANGLE  
ROUND NOSE WITH EXTENDED 6" LIFT EYE  
TAIL CHAIN HOOK IN 5TH WHEEL  
(2) D-RINGS PER SIDE  
1¾" APITONG RAISED  
UPPER FLANGE REINFORCEMENT  
TOOL BOX BEHIND KING PIN

### SUSPENSION

25,000 LB AIR RIDE  
RAISE AND LOWER VALVE

### REAR DECK

14' 1" LONG  
40" LOADED DECK HEIGHT  
(2) FLAG HOLDERS

### MAIN DECK

25' LONG WITH BUCKET WELL  
26" LOADED DECK HEIGHT  
8" GROUND CLEARANCE  
1¾" APITONG DECKING RAISED  
CROSS MEMBERS DESIGNED FOR  
CENTER LOADING  
PERIMETER FRAME DESIGN 18" BEAMS  
HEAVY DUTY REMOVABLE SWING OUT  
REMOVABLE OUTRIGGERS  
(6) D-RINGS PER SIDE  
(2) FLAG HOLDERS AT FRONT

### AXLES

(3) 25,000 NOMINAL, 77½" TRACKING  
54½" AXLE SPACING  
SPRING BRAKES ON 1 AXLE  
16½" X 7" BRAKES  
HUB PILOT, OUTBOARD DRUMS  
LIMIT CHAINS ON ALL AXLES

### WHEELS AND TIRES

8.25 X 22.5 STEEL RIMS  
255 / 70R / 22.5 TIRES

### LIGHTING

D.O.T. APPROVED 12V SEALED  
GROTE HARNESS  
RUBBER MOUNTED LED LIGHTS  
(1) MID-TURN SIGNAL PER SIDE  
(2) CLEARANCE LIGHT PER SIDE  
7 POLE ELECTRICAL SOCKET  
2 TAIL LIGHT PACKAGE WITH  
ALUMINUM COVER

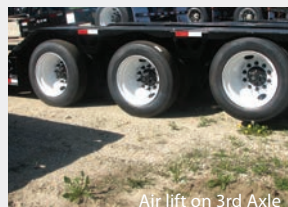
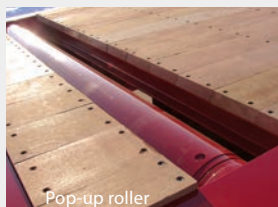
### NEW INDUSTRY-LEADING PAINT PROCESS

1 YEAR WARRANTY  
BLACK, IH RED, OR NEW CAT YELLOW  
AIR & ELECTRIC DONE AFTER

### AVAILABLE MODELS

XL 100 FG  
XL 110 FG  
XL 120 FG  
AVAILABLE WITH 3, 4 OR 5 AXLES  
ALSO AVAILABLE AS AN EXTENDABLE,  
THE XL FGE

## OPTIONS



### POPULAR OPTIONS

Single drop conversion  
Oil field spec with rollers  
Winch in wheel area  
Multiple king pin settings  
Various outriggers/D-rings

Air lift on 3rd axle  
Prepped for Flip Axles,  
Boosters and Power Boosters  
Many more available